

INVECTOR

by Mark Steere

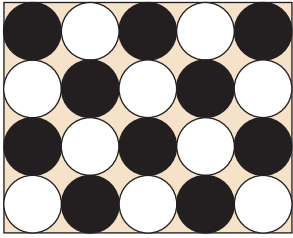


Figure 1
Initial setup

INTRODUCTION

Invector is played on a Konane board - that is, a square grid of pits that can hold one stone each. The grid can be any size, as long as at least one of the dimensions is odd. The board is initially filled with a checkerboard pattern of black and white stones.

Figure 1 shows a 6 x 5 grid. Mark Steere designed Invector in April 2006.

PLAY

The two players, Black and White, take turns moving stones of their own color, one stone per turn. Passing is not allowed, but if you don't have a legal move available, your turn is skipped.

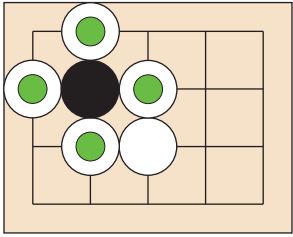


Figure 2
Capturing moves

CAPTURING MOVES

You can move to capture an orthogonally (horizontally or vertically) adjacent enemy stone in any direction. In **Figure 2**, Black can capture by replacement any of the white stones marked with green dots.

NON-CAPTURING MOVES

You can move to an orthogonally adjacent, unoccupied pit, closer to center, Manhattan distance. That is, your stone must be closer, via a series of orthogonally adjacent pits, to a center pit after your move than it was to a center pit before your move. [There is one center pit in a grid with two odd sides, and two center pits in a grid with one odd side and one even side.] In **Figure 3**, Black can move to any of the orthogonally adjacent pits (intersections) marked with a green dot. But Black cannot move to any of the orthogonally adjacent pits marked with a red dot.

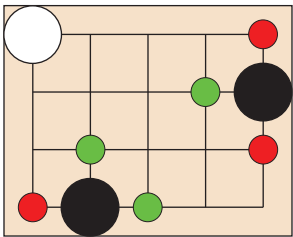


Figure 3
Non-capturing moves

OBJECT OF THE GAME

The goal is to capture all enemy stones. When you have removed all enemy stones from the board, you win.

DESIGN NOTES

Invector was inspired by the ancient, Hawaiian game of Konane. True to the spirit of Konane, Invector begins with a checkerboard pattern of stones, has short range captures, and is extremely simple. Invector simply combines two basic, off-the-shelf ingredients: orthogonal, adjacent capturing moves, and orthogonal, adjacent moves closer to center. Nothing fancy, but it works. Gameplay is finite, decisive, and robust. Flour and water wins the day.

Invector is ultimately its own game. Konane is more violent. Every move involves at least one capture. But Invector is more lethal. Armies don't just come to a standstill, shake hands, and part amicably. One of the armies must be destroyed to the last man.

AUTHOR'S NOTE

Feel free to publish this rule sheet and to program the game of Invector. No licensing fee or royalties are expected. However, please don't change the name or the rules, and please attribute the game to me, Mark Steere. My other games can be found at marksteeregames.com.